



LMEHA

Sustainability Plan (Draft) – Taking LME to Net-Zero

Sustainability@lmeha.com

Sub committee

- ▶ Andy Mortimer
- ▶ David Willis*
- ▶ Hilary Collins
- ▶ Julie Arnold*
- ▶ Jo Felstead
- ▶ Jo Winson*
- ▶ Mike McKeown
- ▶ Paul Hawkins
- ▶ Tim Hopes

Sustainability@Imeha.com

*New

Recruiting

- ▶ General interest
- ▶ Specialist sustainability knowledge and experience
- ▶ Finance experience
- ▶ Flexible time commitment

Today's Goal

- ▶ Plan overview
- ▶ Questions and input
- ▶ Expand sub-committee



Plan Purpose and Roadmap



LME Net-Zero Green House Gas (GHG) Emission Plan

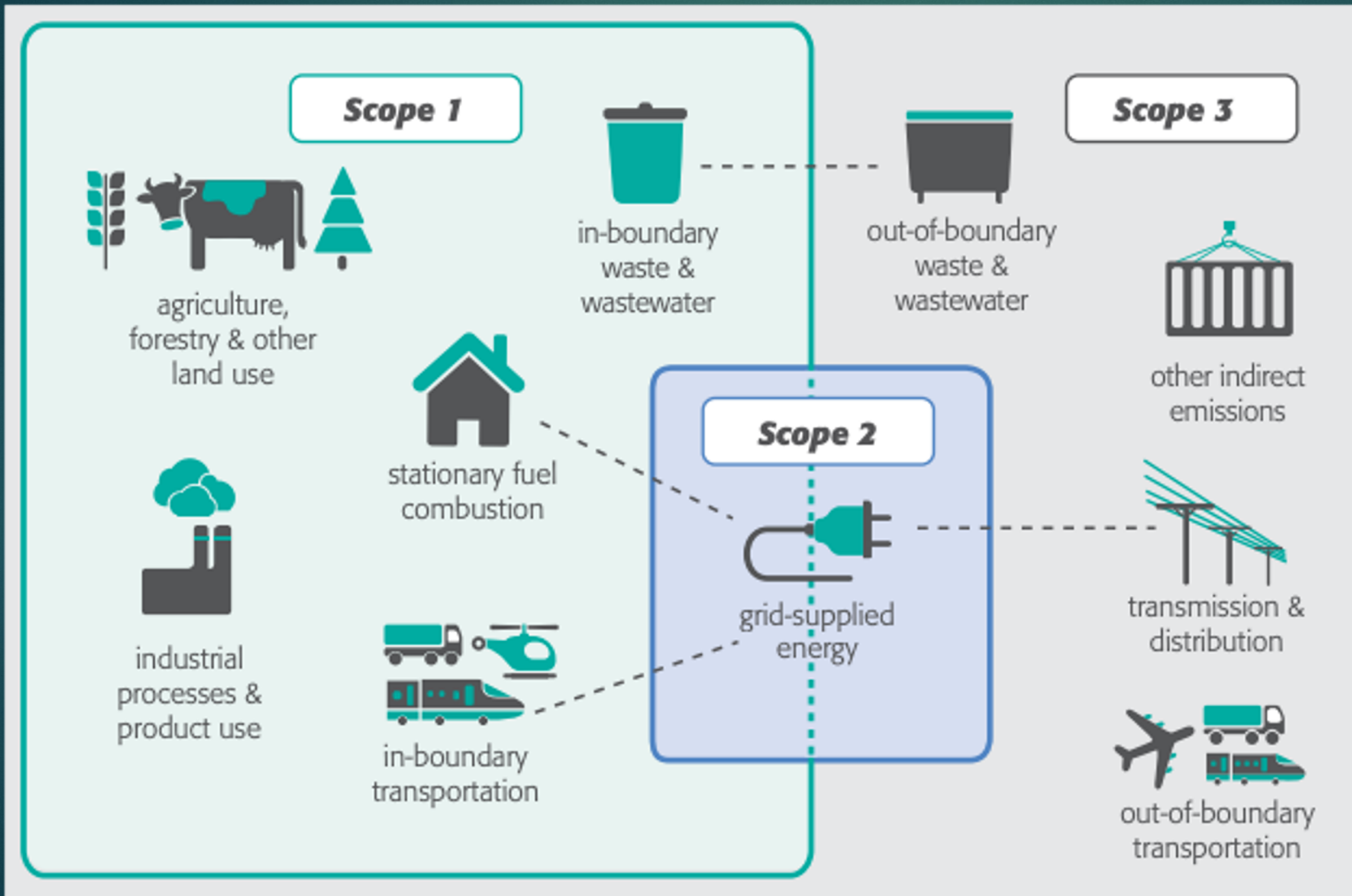
LMEHA | Homeowners | HFG | HML aligned

Running



Costs

Scope

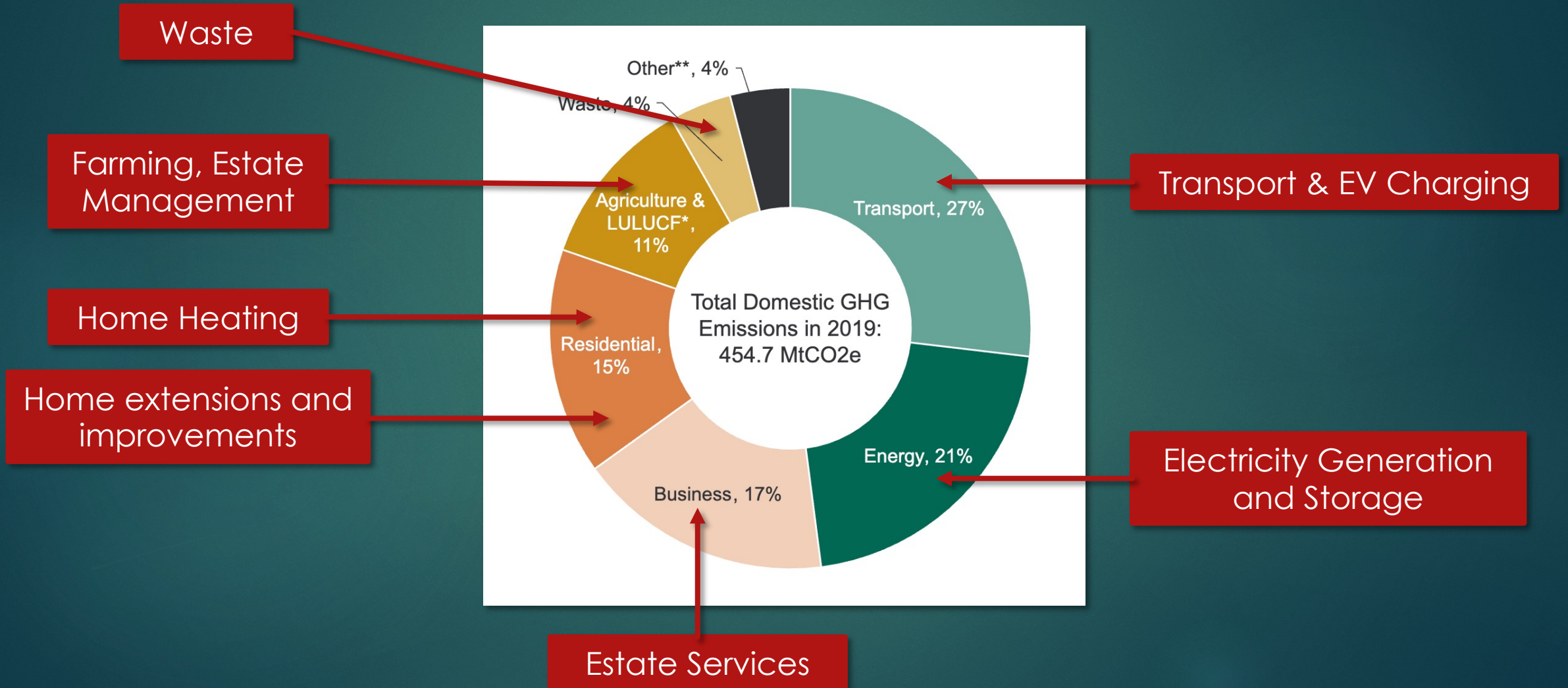


Out of scope

HFG Construction

Homeowner/guest
food consumption

Summary



Home Heating

Air Source Heat Pumps

Hydrogen Conversion

Water Source Heat Pumps

Ground Source
Heat Pumps

Community Heating Systems



Electricity Generation and Storage

Solar



Wind



Hydro



Storage



Transportation

Encourage Personal
EV Adoption

Transition Estate
Vehicles to EVs



Carbon Off-setting?

EV Charging
Infrastructure

Estate Services

Heating

Electricity Generation

Transport



Farming and Estate Management

Reduce livestock
emissions



Reduce fertilizer
emissions



Reduce lake
methane emissions



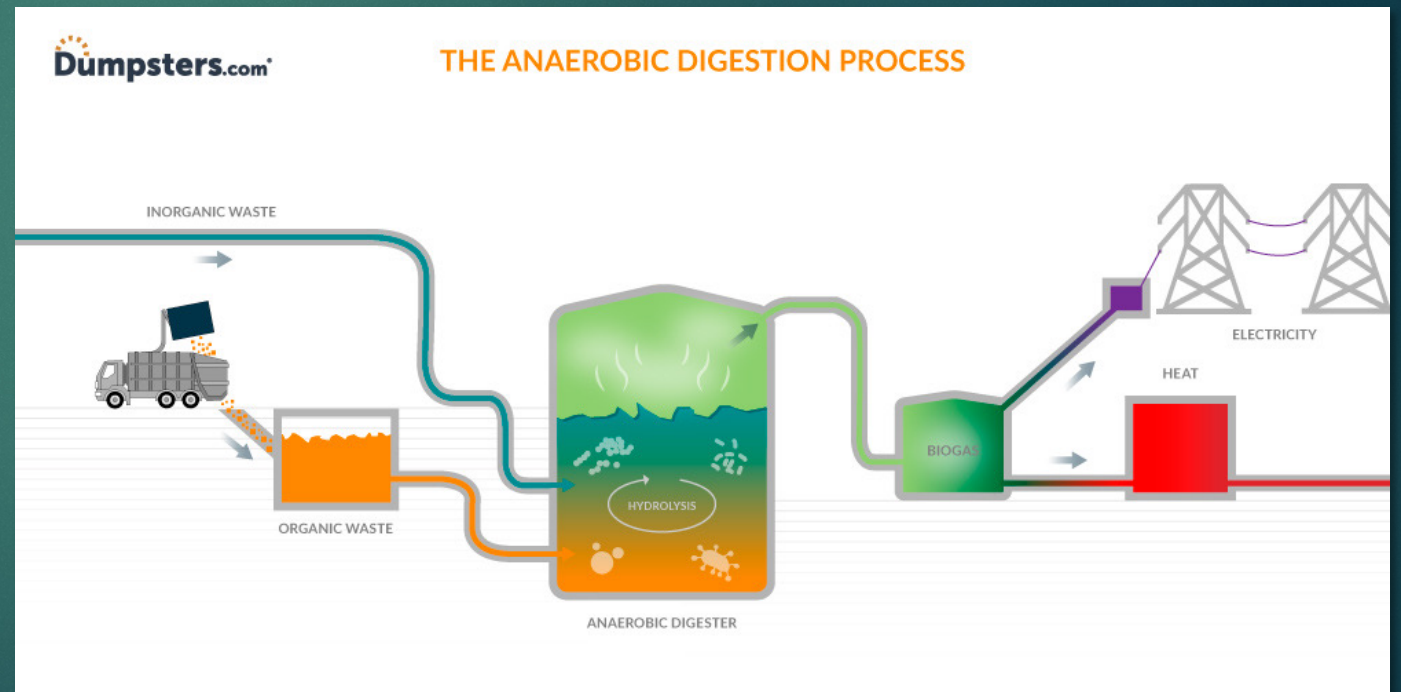
Increase carbon
Sequestration



Waste

Select Zero-emissions waste management company

Anaerobic sewage and food waste digestion



Home Efficiency, Improvements and Extensions

Encourage

Support



Reducing Embodied Carbon in Buildings

Low-Cost, High-Value Opportunities

Net-Zero Materials

Energy Efficiency

Financing

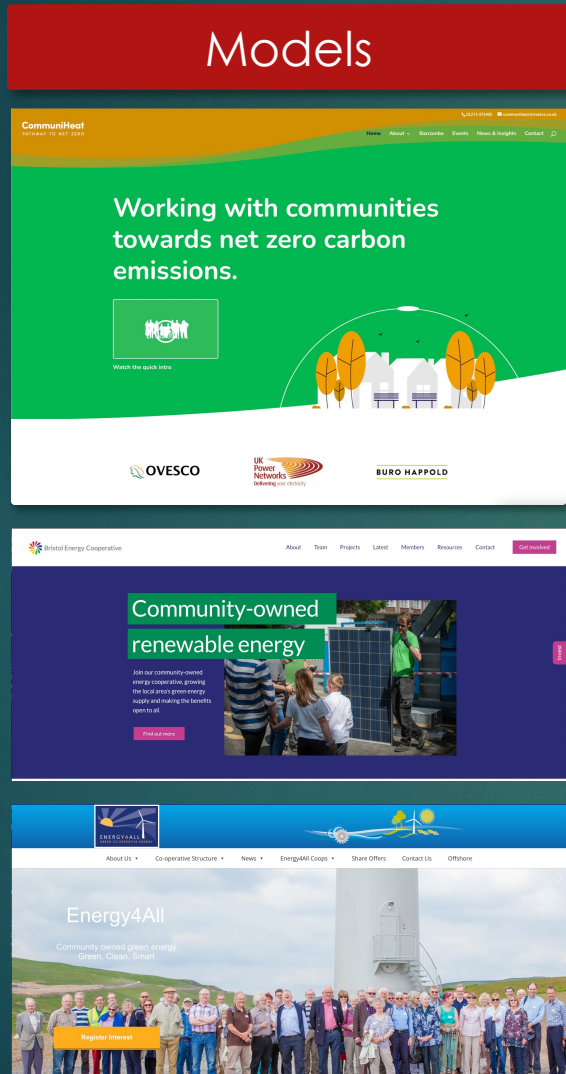
Government Grants

Community Finance

Private Finance



Collaboration



Next Steps



- ▶ Expand sub-committee
- ▶ Homeowner input
- ▶ Engage HFG and HML
- ▶ Expert advice and surveys
- ▶ Partnership development
- ▶ Develop plan
- ▶ Formal consultation
- ▶ Enact the plan



LMEHA

Sustainability Plan (Draft) – Taking LME to Net-Zero

Sustainability@lmeha.com